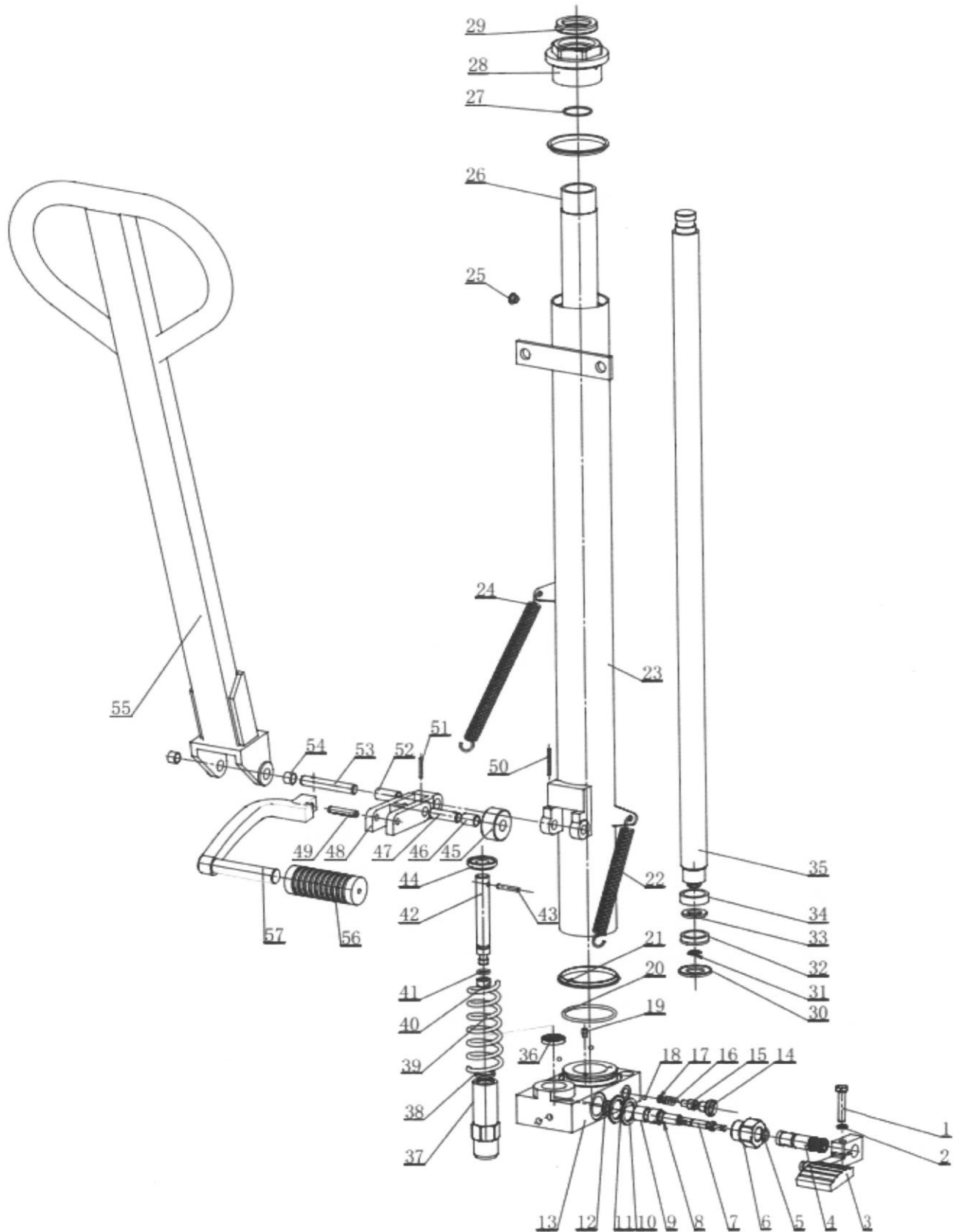




1 & 2 TON HAND PALLET STACKER OPERATING INSTRUCTIONS MANUAL MODEL : HPS1000/HPS2000





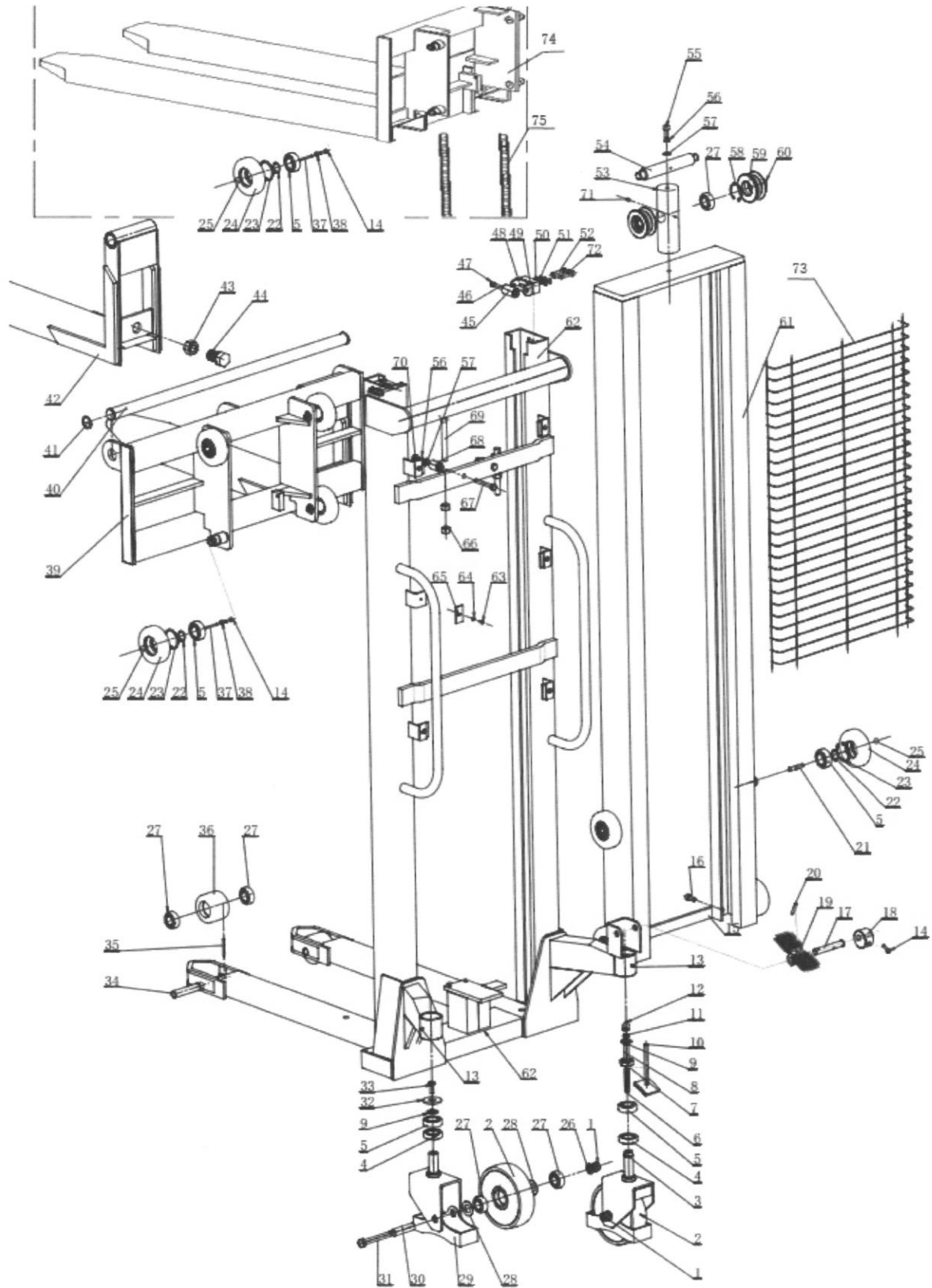
1 & 2 TON HAND PALLET STACKER OPERATING INSTRUCTIONS MANUAL MODEL : HPS1000/HPS2000

No.	Code	Description	Qty.	No.	Code	Description	Qty.
1	A0192	Nut	2	39	B0923	Frame Carriage	1
2	B0843	Wheel	2	40	B0873	Long Axle	1
3	B0849	Frame of Wheel with	1	41	A0053	Locking Ring	2
4	A0149	Bearing	2	42	B0860	Adjusting Fork	2
5	A0159	Bearing	10	43	A0378	Bolt	2
6	B0415	Spring	1	44	B0465	Screw	2
7	A0199	Nut	1	45	B0678	Wheel	2
8	B0416	Cover	1	46	B0680	Bolt	2
9	B0856	Washer	2	47	A0045	Locking Ring	2
10	B0417	Brake Plate	1	48	B0677	Axle	2
11	A0206	Nut	1	49	B1045	Washer	2
12	B0411	Nut	1	50	A0139	Spring Washer	6
13	A0380	Zerk	2	51	A0003	Washer	6
14	A0221	Screw	5	52	A0229	Screw	4
15	B0915	Joint lever	1	53	B0924	Frame	1
16	A0236	Screw	2	54	B0557	Axle	1
17	B0414	Pin	1	55	A0237	Screw	1
18	B0413	Cam	1	56	A0004	Washer	5
19	B0412	Footplate	1	57	A0140	Spring Washer	3
20	A0028	Elastic Pin	1	58	A0061	Locking Ring	2
21	A0170	Screw	7	59	B0370	Roller for Chain	2
22	A0050	Locking Ring	8	60	A0049	Locking Ring	2
23	A0062	Locking Ring	8	61	B0934	Inner Mast	1
24	B0402	Roller	8	62	B0932	Mast	1
25	A0291	Steel Ball	8	63	A0181	Screw	6
26	A0142	Spring Washer	4	64	A0136	Spring Washer	6
27	A0155	Bearing	10	65	B0440	Clip	6

28	B0410	Washer	4	66	A0196	Nut	4
29	B0271	Frame of Wheel	1	67	A0266	Screw	2
30	B0689	Axle of Wheel	2	68	B0917	Washer	2
31	A0279	Screw	2	69	B0441	Screw	2
32	B0676	Washer	1	70	A0206	Nut	2
33	A0379	Screw	1	71	A0166	Screw	1
34	B0848	Axle of Loading Roller	2	72	A0230	Screw	2
35	A0017	Elastic Pin	2	73	B0847	Reticulation	1
36	B0844	Wheel	2	74	B0928	Fixed Fork	1
37	A0033	Straight pin	4	75	A0300	Chain	2
38	A0204	Nut	4				



1 & 2 TON HAND PALLET STACKER OPERATING INSTRUCTIONS MANUAL MODEL : HPS1000/HPS2000





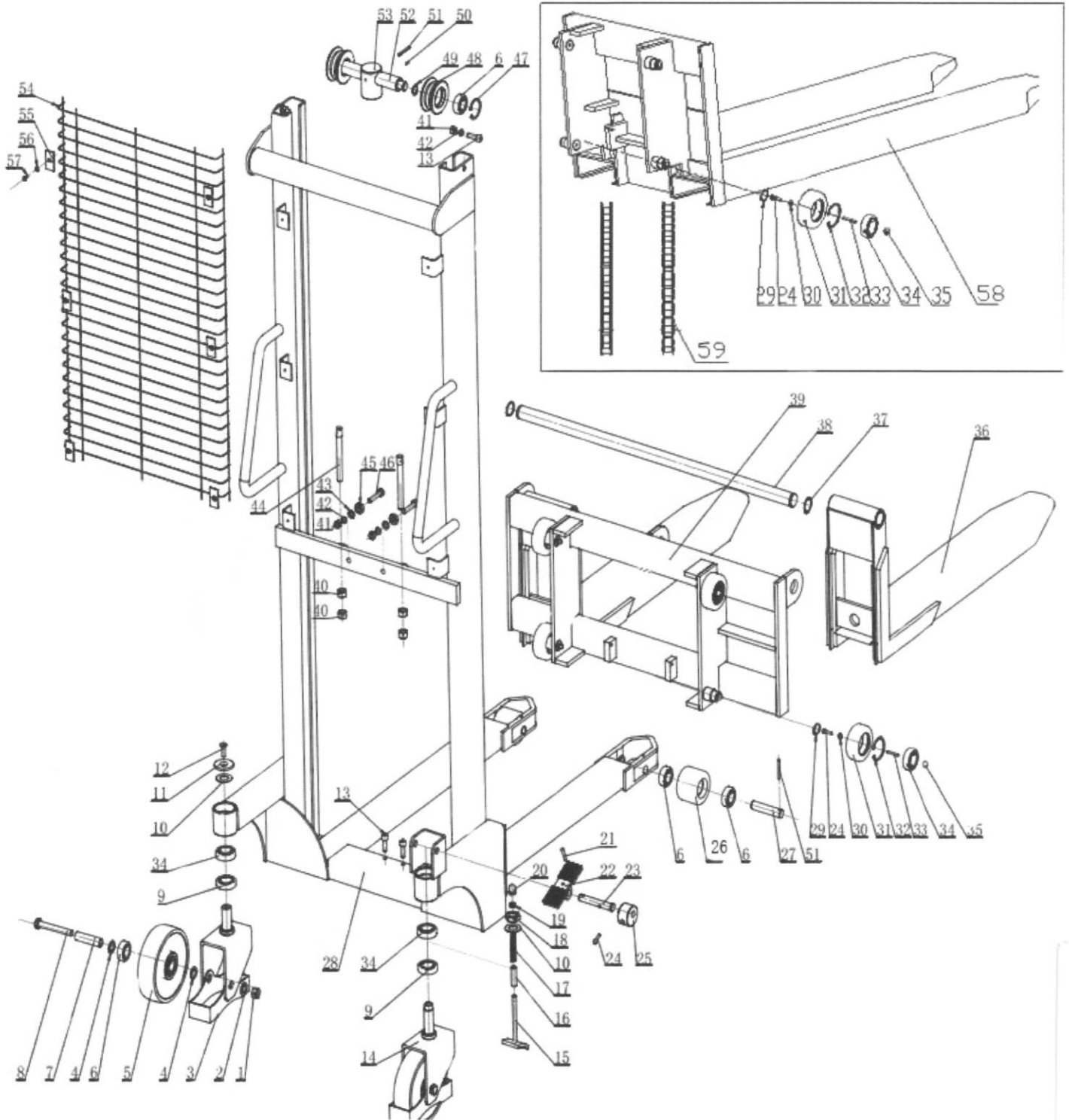
1 & 2 TON HAND PALLET STACKER OPERATING INSTRUCTIONS MANUAL MODEL : HPS1000/HPS2000

No.	Code	Description	Qty.	No.	Code	Description	Qty.
1	A0228	Screw	1	31	B0401	Roller	4
2	A0003	Washer	1	32	A0062	Locking Ring	4
3	B0556	Lever Plate	1	33	A0035	Straight pin	4
4	B0545	Axis of rotation	1	34	A0156	Bearing	6
5	A0339	O-Ring	1	35	A0291	Steel Ball	3
6	B0540	Screw	1	36	B0860	Adjusting Fork	2
7	B0554	Valve Spindle of Pump	1	37	A0053	Locking Ring	2
8	B0554	Seat of pump Valve	1	38	B0873	Long Axle	1
9	B0543	Pack-off bushing	1	39	B0872	Frame Carriage	1
10	A0341	Seal Washer	2	40	A0196	Nut	4
11	A0340	Seal Washer	2	41	A0206	Nut	4
12	A0336	Seal Washer	1	42	A0004	Washer	4
13	B0539	Body of Pump	1	43	A0140	Spring Washer	4
14	B0098	Cover with Screw	1	44	B0441	Screw	2
15	B0099	Adjusting Bolt	1	45	B0867	Washer	2
16	B0227	Spring	1	46	A0267	Screw	2
17	B0100	Spring Seat	1	47	A0061	Locking Ring	2
18	A0288	Steel Ball	5	48	B0370	Roller for Chain	2

19	A0337	Oil conduit	1	49	A049	Locking Ring	2
20	A0352	O-Ring	1	50	A0166	Screw	1
21	A0331	Seal Washer	2	51	A0017	Elastic Pin	3
22	B0825	Spring	1	52	B0557	Axle	1
23	B0546	Tank shell	1	53	B0861	Frame	1
24	B0824	Spring	1	54	B0847	Reticulation	1
25	A0346	The plastic plug	1	55	B0440	Clip	6
26	B0550	Oil cylinder	1	56	A0136	Spring Washer	6
27	A0112	O-Ring	1	57	A0181	Screw	6
28	B0553	Cover with Screw	1	58	B0928	Fixed Fork	1
29	A0343	Sealing ring	1	59	A0300	Chain	2
30	A0332	Seal Washer	1				



1 & 2 TON HAND PALLET STACKER OPERATING INSTRUCTIONS MANUAL MODEL : HPS1000/HPS2000





1 & 2 TON HAND PALLET STACKER OPERATING INSTRUCTIONS MANUAL MODEL : HPS1000/HPS2000

No.	Code	Description	Qty.	No.	Code	Description	Qty.
1	A0192	Nut	2	31	A0350	Locking Ring	1
2	A0142	Spring Washer	2	32	A0333	Seal Washer	1
3	B0271	Frame of Wheel	1	33	A0142	Spring Washer	1
4	B0856	Washer	4	34	B0823	Seal Washer	1
5	B0843	Wheel	2	35	B0551	Lifting Piston Rod	1
6	A0155	Bearing	10	36	A0334	Seal Washer	1
7	B0689	Axle of Wheel	2	37	B0541	Pumping Cylinder	1
8	A0279	Screw	2	38	A0335	Dust Ring	1
9	A0149	Bearing	2	39	B0552	Spring	1
10	B0410	Washer	2	40	A0344	Seal Washer	1
11	B0676	Washer	1	41	A0345	O-Ring	1
12	A0379	Screw	1	42	B0542	Pump Piston Rod	1
13	A0237	Screw	4	43	A0032	Straight pin	1
14	B0849	Frame of Wheel with	1	44	B0544	Cap of Spring	1
15	B0417	Brake Plate	1	45	B0826	Pressure Roller	1
16	B0416	Cover	1	46	A0347	Self-lubricating bearing	1
17	B0415	Spring	1	47	B0547	Shaft	1
18	A0199	Nut	1	48	B0822	Shaft	1
19	A0206	Nut	1	49	A0019	Elastic Pin	1
20	B0411	Nut	1	50	A0009	Elastic Pin	1
21	A0028	Elastic Pin	1	51	A0349	Elastic Pin	1
22	B0412	Footplate	1	52	A0348	Self-lubricating bearing	1
23	B0414	Pin	1	53	B0555	Shaft	1
24	A0221	Nut	5	54	A0351	Self-lubricating bearing	2
25	B0413	Cam	1	55	B0827	Handle	1

26	B0844	Wheel	2	56	B0502	Clip band	1
27	B0848	Axle of Loading Roller	2	57	B0434	Connecting rod	1
28	B0866	Mast	1				
29	A0050	Locking Ring	4				
30	A0204	Nut	4				