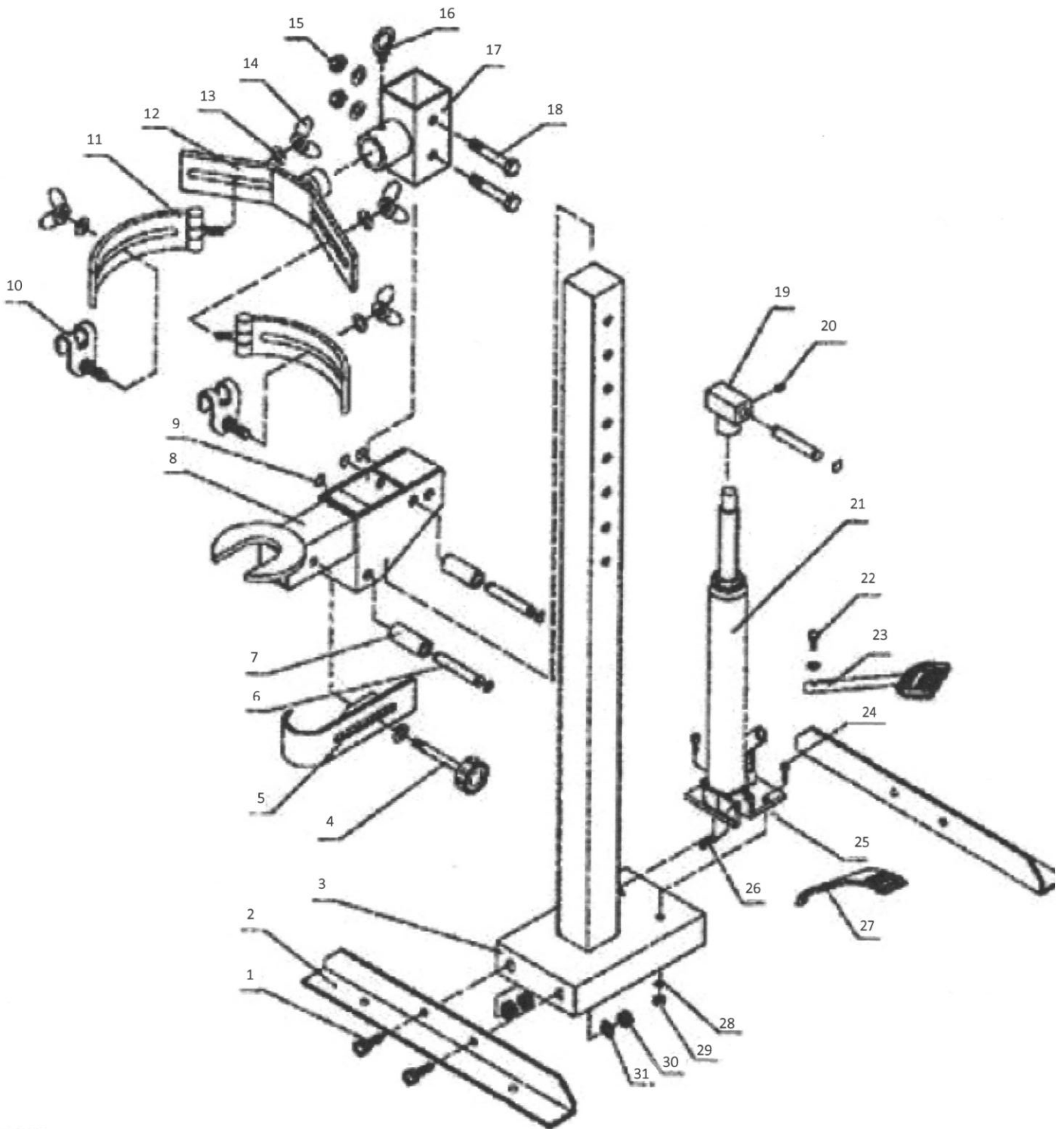




1 TON STRUT SPRING COMPRESSOR OPERATING INSTRUCTIONS MANUAL

MODEL : HCSC1





1 TON STRUT SPRING COMPRESSOR
OPERATING INSTRUCTIONS MANUAL

MODEL : HCSC1

No.	Description	QTY	No.	Description	QTY
1	Bolt	4	17	Upper strut support	1
2	Bracket	2	18	Bolt	2
3	Upright	1	19	Saddle	1
4	Screw rod	1	20	Screw	1
5	Adjustable strut shaft clasp	1	21	Bottle jack	1
6	Handle sleeve	3	22	Bolt	1
7	Bushing	2	23	Lift foot pedal	1
8	Lower strut support	1	24	Bolt	2
9	Retaining ring	6	25	R-pin	1
10	Spring clasp claw	2	26	Pin	1
11	Spring clasp holder	2	27	Release foot pedal	1
12	Spring clasp bracket	1	28	Washer	3
13	Washer	7	29	Nut	2
14	Fly nut	4	30	Nut	4
15	Nut	2	31	Washer	4
16	Screw ring	1			