

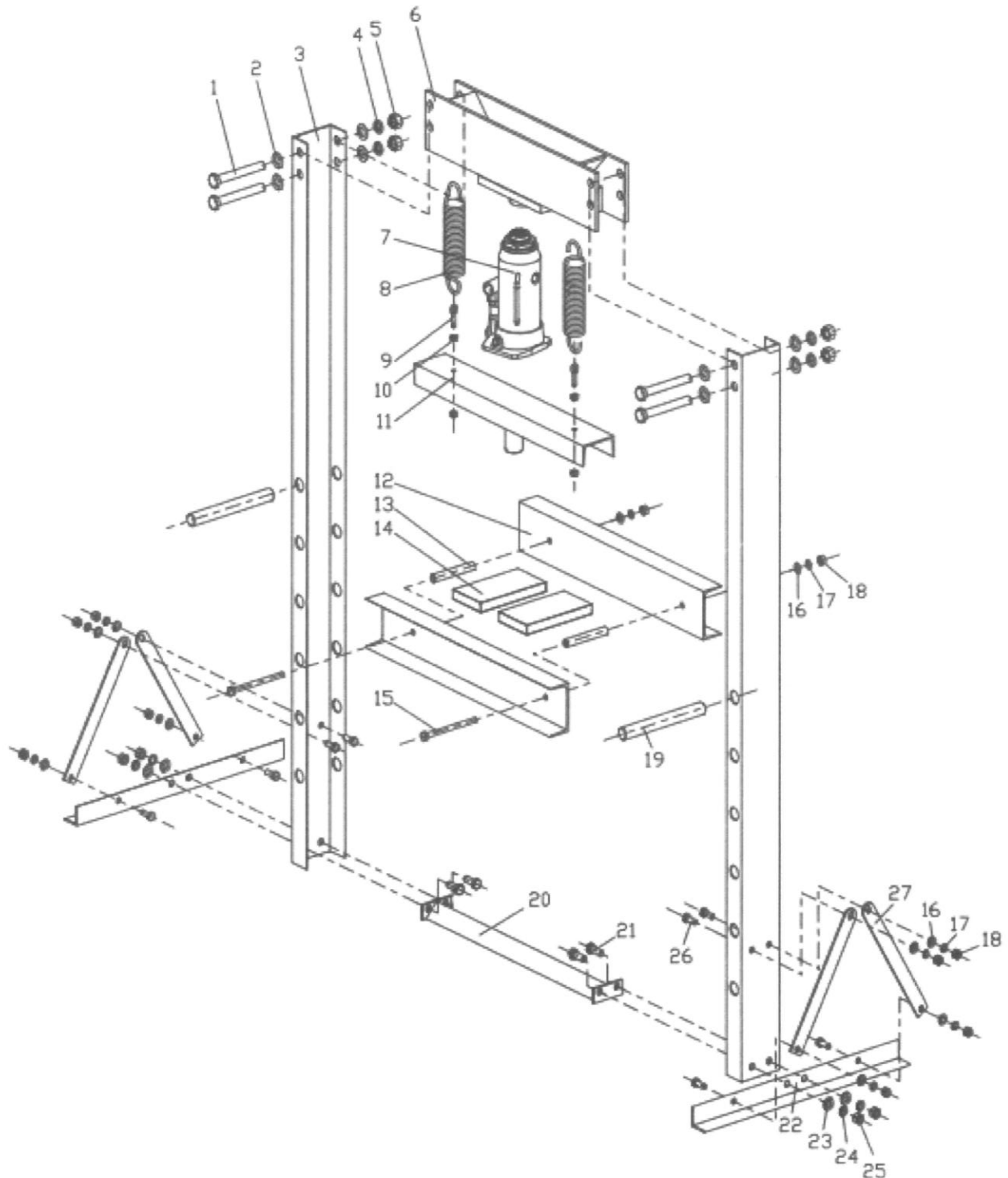


20 TON SHOP PRESS

OPERATING INSTRUCTIONS MANUAL

MODEL : TRSP20000E

SHOP PRESS PART LIST (A)





20 TON SHOP PRESS

OPERATING INSTRUCTIONS MANUAL

MODEL : TRSP20000E

SHOP PRESS PARTS LIST (FIGURE A)

Part	Description	Qty	Part	Description	Qty
1	Bolt M16 X 120	4	15	Bolt M10 X 130	2
2	Flat Washer 16	8	16	Flat Washer 10	10
3	Side Post	2	17	Spring Washer 10	10
4	Spring Washer 16	4	18	Nut M10	10
5	Nut M16	4	19	Bed Support Pins	2
6	Upper Cross Member	1	20	Tie Bar	1
7	Hydraulic Assembly	1	21	Bolt M12 X 30	4
8	Puller Spring	1	22	Base Foot	2
9	Bolt	2	23	Flat Washer 12	4
10	Nut M16	4	24	Spring Washer 12	4
11	Bracket	1	25	Nut M12	4
12	Press Bed	2	26	Bolt M10 X 25	8
13	Spacer Tube	2	27	Stay Bar	4
14	Press Blockers	2			



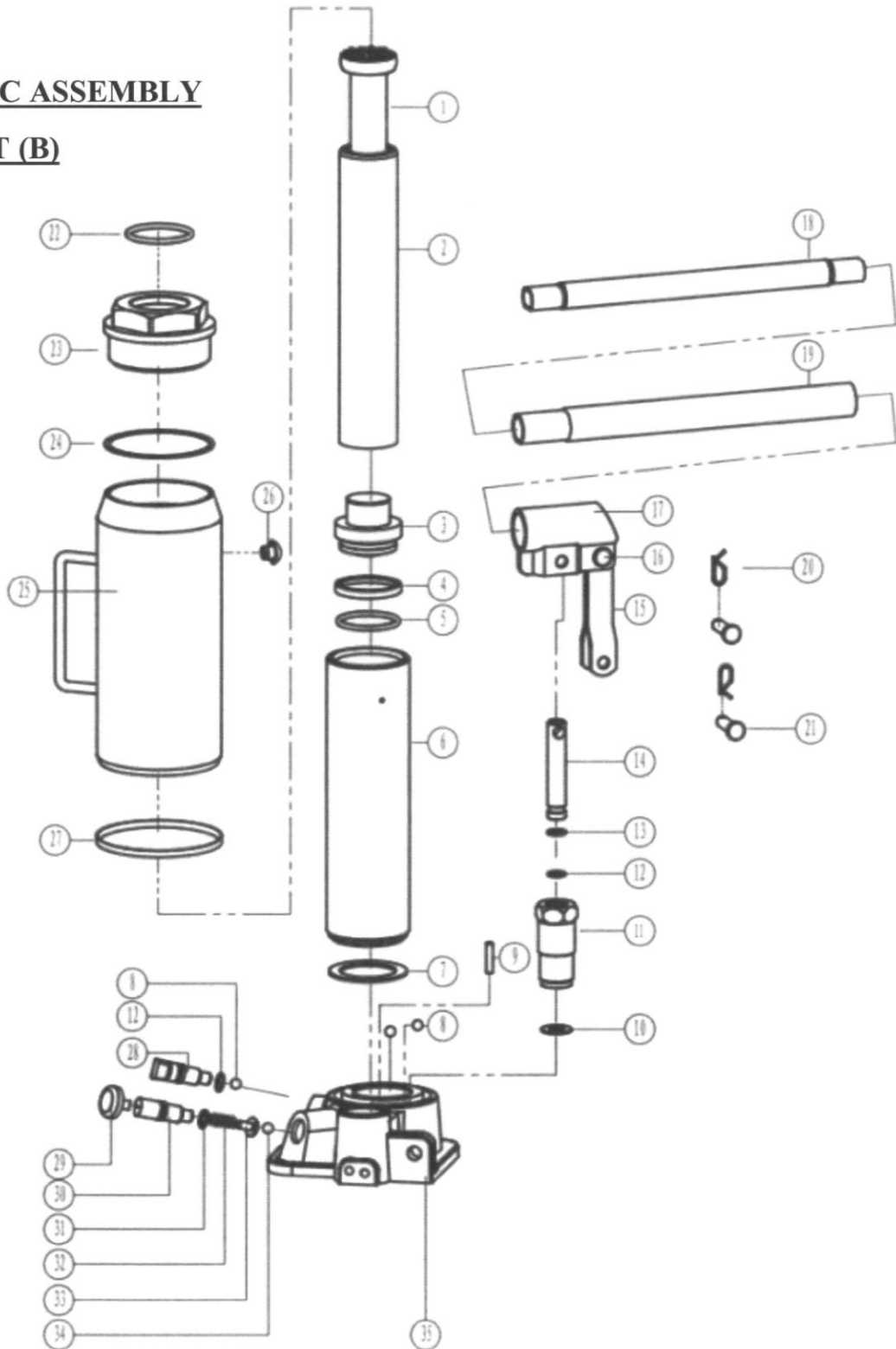
20 TON SHOP PRESS

OPERATING INSTRUCTIONS MANUAL

MODEL : TRSP20000E

HYDRAULIC ASSEMBLY

PARTS LIST (B)





20 TON SHOP PRESS

OPERATING INSTRUCTIONS MANUAL

MODEL : TRSP20000E

HYDRAULIC ASSEMBLY PARTS LIST (FIGURE B)

Part	Description	Qty	Part	Description	Qty
1	Extension Screw	1	19	Lower Handle	1
2	Cylinder	1	20	R-Pin	2
3	Piston	1	21	Bolt	2
4	Nylon Seals	1	22	O-Ring	1
5	O-Ring	1	23	Cap	1
6	Ram	1	24	Seal Kits	1
7	Nylon Seals	1	25	Oil Tight Tank	1
8	Steel Ball 6mm	3	26	Oil Plug	1
9	Oil Filter Strainer	1	27	Seal Kits	1
10	Copper Washer	1	28	Control Knob	1
11	Pump Cylinder	1	29	Safety Valve Cap	1
12	O-Ring	2	30	Pressure Valve	1
13	Retainer	1	31	O-Ring	1
14	Piston Rod	1	32	Spring	1
15	Connecting Rod	2	33	Valve End	1
16	Pin	1	34	Steel Ball 3mm	1
17	Handle Socket	1	35	End Base	1
18	Upper Handle	1			