

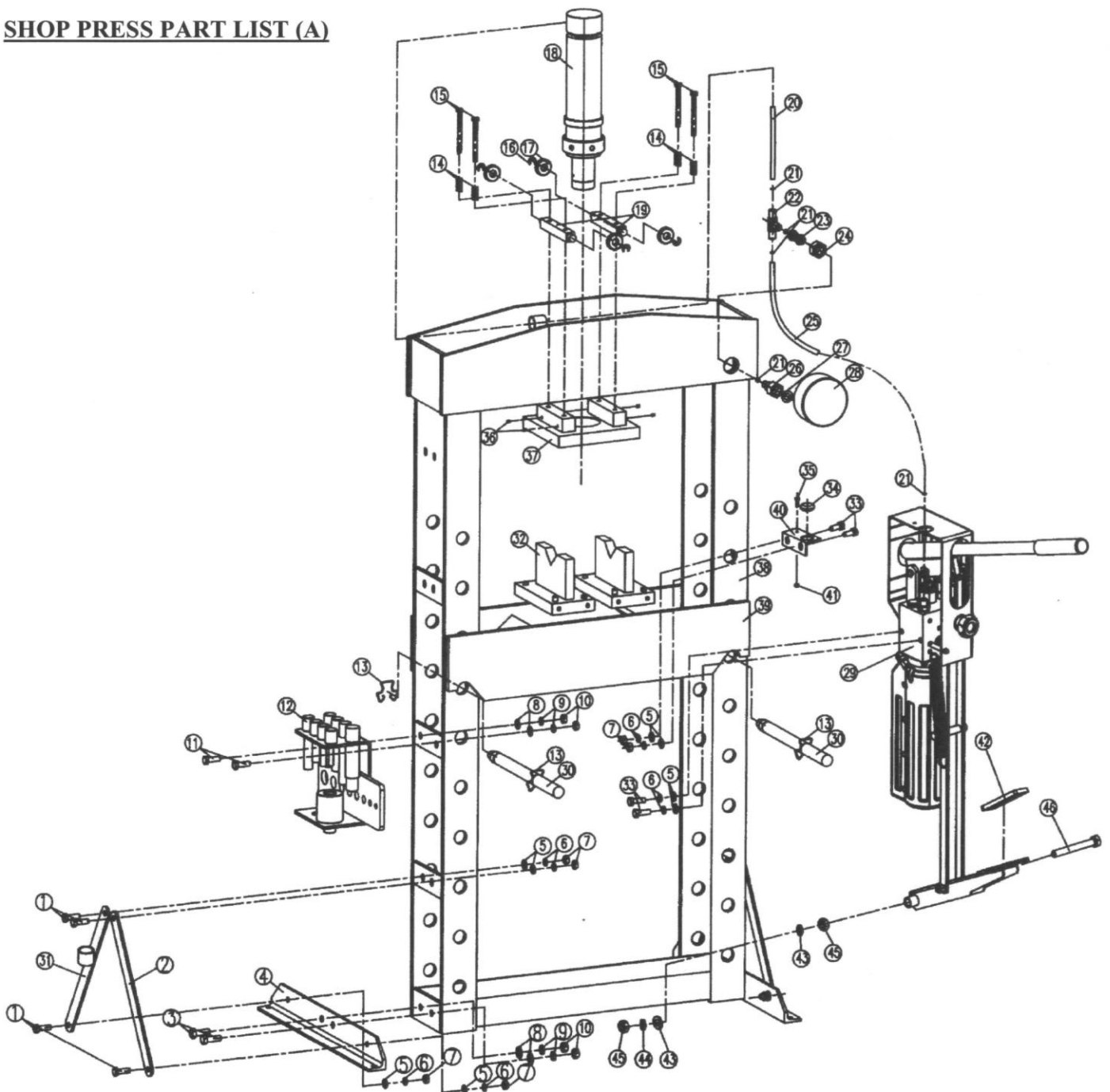


20 TON SHOP PRESS WITH (FOOT PEDAL)

OPERATING INSTRUCTIONS MANUAL

MODEL : SP20000FP

SHOP PRESS PART LIST (A)





20 TON SHOP PRESS WITH (FOOT PEDAL)

OPERATING INSTRUCTIONS MANUAL

MODEL : SP20000FP

SHOP PRESS PARTS LIST (FIGURE A)

Part	Code	Description	Qty	Part	Code	Description	Qty
1		Bolt M10X30	8	24		Nut M20X2	1
2		Support Plate	3	25		Tubing	1
3		Bolt M12X35	4	26		Pressure Meter Joint	1
4		The Bottom Angle	2	27		Rectangular Sealing Ring	1
5		Washer 10	12	28		Pressure Gauge	1
6		Spring Washer 10	12	29		The Treadle Pump	1
7		Nut M10	10	30		The Stop Lever	2
8		Washer 12	6	31		The Support Arm	1
9		Spring Washer 12	6	32		Press Block	2
10		Nut M12	6	33		Bolt M10X25	4
11		Bolt M12X30	2	34		Pipe Fixing Sleeve	1
12		Pressure Head	1	35		Bolt M5X12	1
13		Butterfly Ring	4	36		Bolt M5X8	4
14		Spring	4	37		Cylinder Fixing Plate	1
15		Bolt M8X110	4	38		Frame	1
16		Ring	4	39		In The Groove	1
17		Bearing	4	40		Fixed Plate Tubing	1
18		Cylinder Parts	1	41		Nut M5	1
19		The Roller Shaft	2	42		Pedal Pad	1
20		Tubing	1	43		Washer 14	2
21		O-ring 5X1.8	4	44		Spring Washer 10	2
22		Three Pass Joint	1	45		Nut M10	2
23		Tubing	1	46		Screw	1
					TROCTSP20TFP	Oil Cylinder Tank	

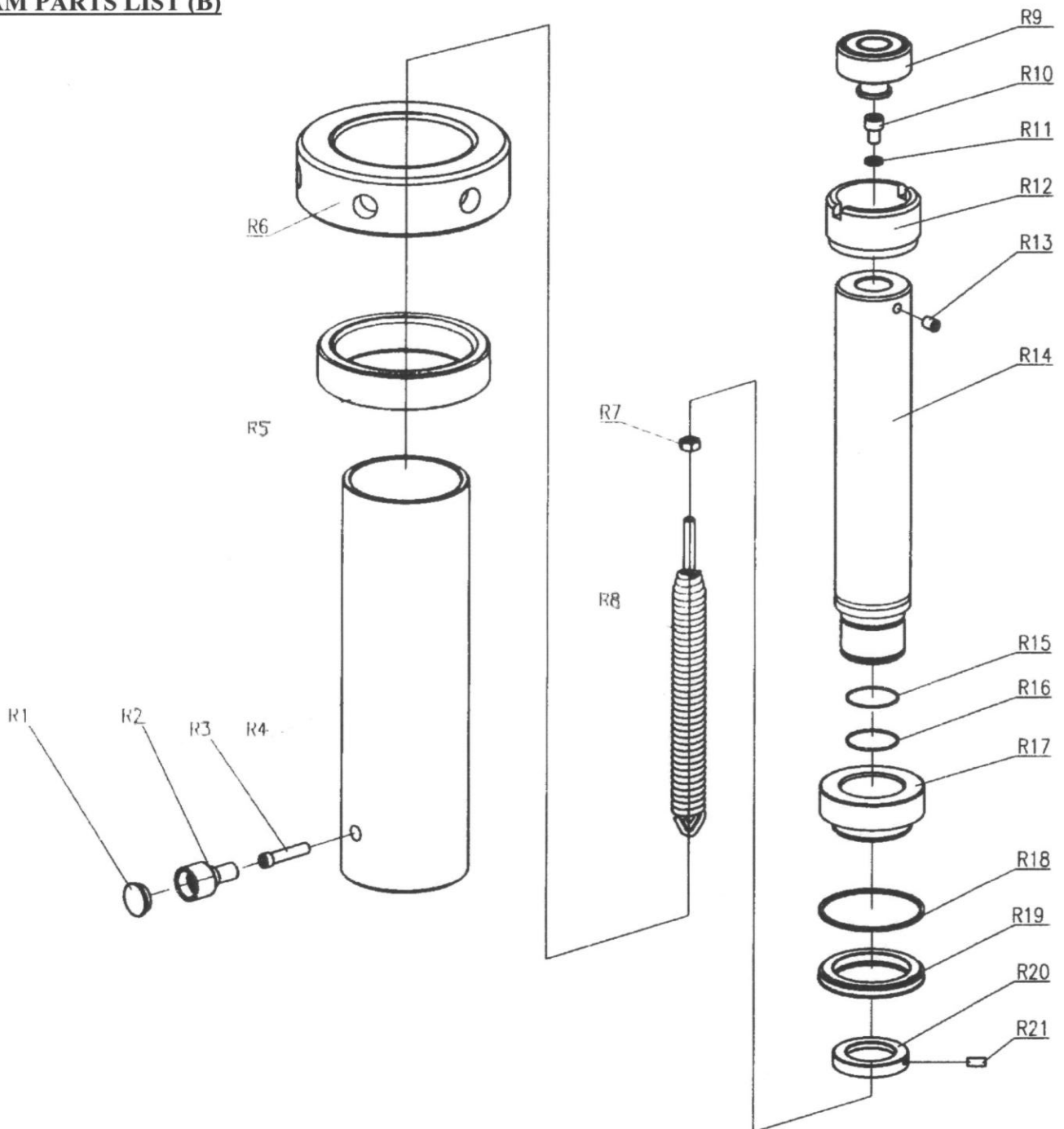


20 TON SHOP PRESS WITH (FOOT PEDAL)

OPERATING INSTRUCTIONS MANUAL

MODEL : SP20000FP

RAM PARTS LIST (B)





20 TON SHOP PRESS WITH (FOOT PEDAL)

OPERATING INSTRUCTIONS MANUAL

MODEL : SP20000FP

RAM PARTS LIST (B)

Part	Description	Qty	Part	Description	Qty
1	Dust Cap	1	12	Retainer Nut	1
2	Coupling Bolt	1	13	Pin M8X10	1
3	Screw	1	14	Ram	1
4	Cylinder	1	15	Cap	1
5	Protecting Ring	1	16	O-ring	1
6	Protecting Ring	1	17	Piston Ring	1
7	Nut M8	1	18	Ring Back Care	1
8	Spring	1	19	Y-ring	1
9	Ram Head	1	20	Spacing Ring	1
10	Bolt M8X10	1	21	Bolt M6X6	1
11	Retangular Ring	1			